

COAL MINING / HARD ROCK MINING

CROWN PLATES

OPTIMAL SURFACE SUPPORT FOR COAL AND SOLID BOLTS

DESCRIPTION

Crown plates are high load bearing capacity plates that provide optimal support in a range of strata conditions. These plates are typically used with coal bolts and solid (Secura®) bolts.

Available plates:

- 5L 150mm
- 8L 150mm
- 8L 200mm

Plates can be supplied in black steel or hot dip galvanised.

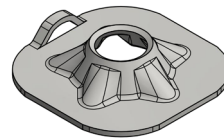
200mm Crown plates have been developed as a cost-effective alternative to Combi plates, reducing plate costs while providing enhanced strata support.

APPLICATION AND USES

Primary use is strata reinforcement in underground mines. Designed to help prevent loose material from falling between the roof bolt patterns and provide strength to the immediate roof.

ADVANTAGES

- Optimal Surface Support
- Flexibility
- Variety of Coatings
- Variety of Configurations
- Alternative to a Combi plate when using 200mm Crown plates



5L Crown Plate



8L Crown Plate

TECHNICAL DATA

Mechanical Properties

Typical Bolt Used	¹ Coal Bolt/ ¹ Secura Bolt	¹ Coal Bolt/ ¹ Secura Bolt	¹ Coal Bolt/ ¹ Secura Bolt
Dimensions (mm)	150x150	150x150	200x200
Thickness (mm)	5.0	5.0	5.0
Height (mm)	35.0	35.0	35.0
Hole Size (mm)	38-42	38-42	38-42
Typical Yield Strength (MPa)	410-510	410-510	410-510
Typical Tensile Strength (MPa)	470-550	470-550	470-550
Plate Load (kN)	180	240	260
Crown profile	5L	8L	8L
Weight (kg)	0.82	0.82	1.5

¹ Test conducted over 100mm hole

PACKAGING AND TRANSPORTATION

Item code	Description
NT0004812	PLATE CRN 38X200X200X5MM 8L LOOP GL
NT0004752	PLATE CRN 38X200X200X5MM 8L LOOP BK
NF0004687	PLATE CRN24 38X150X150X5MM 8L GL
NF0004683	PLATE CRN18 38X150X150X5MM5L GL
NF0004685	PLATE COM CRN24 38X150 280X300MM UTS GL

Plate Dimensions	5L 150x150 (mm)	8L 150x150 (mm)	8L 200X200 (mm)
No. of Units (pcs)	980	980	750
Nominal Weight (kg)	803	803	1125
Pallet Size (mm)	1150x1150	1150x1150	1150x1150

APPROVALS AND CERTIFICATES

Product Standards

Material : AS1594

Galvanising : AS4680

TECHNICAL SUPPORT

We provide technical advisory service by a team of specialists in the field. The service includes on site assistance and advice on evaluation trials and laboratory work. All technical data sheets can be found on www.minovalglobal.com

MANUFACTURER

Minova Australia Pty Ltd

An ISO 9001:2015 Quality Management Certified Company



FS 603747

ADDITIONAL INFORMATION

Minova Australia offers a comprehensive range of products, all of which have been developed after extensive research and testing on a global scale via our international network of operations. These products include:

- Resin anchor systems
- High yield grouts and foams
- Monolithic chock systems
- High performance cable bolt grouts
- Polyurethane resin systems
- Sprayable coatings for ventilation control
- Water stop grouts
- Ventilation formwork systems including: Meshblock and Tecmesh
- Grout mixers and batchers both air and hydraulically operated
- Contract Installations
- Flexible membranes for strata support and waterproofing applications

CUSTOMER SERVICE

Minova Australia

(1800 Minova) 1800 646 682
 (1300 Minova) 1300 646 682
 +61 2 4939 5159 (international)

Email: sales_au@minovaglobal.com
 Website: www.minovaglobal.com/apac

LEARN MORE

Click on the website links to learn more about Minova and their solutions.

- [About Minova](#)
- [Lokset Resin Capsules](#)
- [Anchoring Grouts](#)
- [High Volume Output Grouts](#)
- [Injection Chemicals](#)
- [Sprayed Cements](#)
- [Steel and Fibreglass](#)
- [Mesh](#)

Ventilation & Air Control
Surface to Seam
UniPass Bolting Technologies
Pre-Driven Recovery Roadway
Optimised Ore Recovery

DISCLAIMER

All information contained in this document is provided for informational purposes only and is subject to change without notice. Since Minova cannot anticipate or control the conditions under which this information and its products may be used, each user should review the information in the specific context of the intended application. To the maximum extent permitted by law, Minova specifically disclaims all warranties express or implied in law, including accuracy, non-infringement, and implied warranties of merchantability or fitness for a particular purpose. Minova specifically disclaims, and will not be responsible for, any liability or damages resulting from the use or reliance upon the information in this document.

The Minova Logo is a registered trademark.

© Minova Australia Pty Ltd

® Registered trademark of Minova International Limited